

Pocket instruments












 **Riester**

The familiar way



**Handy instruments for a
professional diagnosis.**

Instruments for ENT
Ophthalmological instruments

		Introduction ri-mini® / pen-scope®	03
		Otoscopes	04
		ri-mini® / pen-scope® otoscopes <i>Accessories</i> <i>Magnifying lenses, specula</i> <i>Inflation bulb and connector for pneumatic test</i>	04
		Ophthalmoscopes	06
		ri-mini® / pen-scope® ophthalmoscopes	06
		Lamps	06
		Power sources	07
		Battery handle type AA	
		Sets	07
		ri-mini® sets	07
		pen-scope® sets	08
		Introduction fortelux® H / fortelux® N	09
		Diagnostic penlights	10
		fortelux® H diagnostic penlights <i>Accessories</i> <i>fortelux® H head</i> <i>Tongue blade holder, wooden tongue depressor</i> <i>Battery handle</i>	10
		fortelux® N diagnostic penlights	11
		ri-light® set <i>Accessories</i> <i>Tongue blade holder, wooden tongue depressor</i> <i>Laryngeal mirror, red open filter</i>	11
		Lamps	11

ri-mini®/pen-scope®

Riester offers first-class pocket instruments for ENT and direct ophthalmoscopy made of strong materials. The ri-mini® and pen-scope® otoscopes and ophthalmoscopes are suitable for both physicians and students alike. Their lightness and handy design make them not only useful companions during rounds and house calls, but also in daily use. ri-mini® and pen-scope® otoscopes and ophthalmoscopes convince with their particularly attractive cost-effectiveness.

We will be pleased to provide more information about the ordering requirements for customer specific models and colours upon request.

- ri-mini® with halogen illumination similar to daylight. pen-scope® with direct vacuum illumination or halogen illumination
- Made of glass-fibre reinforced plastic in appealing Riester colours.
- Heads with screw fitting, exchangeable.
- Metal clip on handle for secure attachment to the doctor's coat.
- Instruments can be easily switched on and off using the slide-switch on the handle.
- Practical adjustment ring with sturdy metal screw thread to turn the instrument head to the ideal position on the handle.
- Sets are supplied in hard case boxes or in nylon bags.
- Developed and manufactured in Germany.



The instrument heads with screw fitting can be exchanged quite simply.



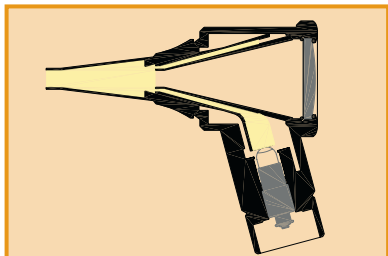
The instrument head is brought into the desired position by turning and fixating the adjustment ring.



The casing is made of glass-fibre reinforced plastic and is thus extremely impact resistant.

Otosopes

The handy ri-mini® F.O. and pen-scope® otoscopes with direct illumination are used to illuminate and examine the external auditory canal. Innovative fibre-optics provide an optimal light beam. The direct illumination offers an upgraded, reflexion-minimized illumination. Difficult to reach locations can be illuminated with a source which is similar to daylight. High-class materials and first-class workmanship guarantees above average reliability in every examination.



Fibre-optics provide unhindered, glare-free vision. First-rate light transmission guarantees the best possible illumination- also in poorly accessible parts of the body.



With the ri-mini® F.O. and pen-scope® otoscopes the external auditory canal can be illuminated and examined exactly.



ri-mini® F.O. otoscope

- With HL 2.5 V halogen lamps.
- Fibre-optics for an optimum light beam and transmission of light. In combination with the lamp produce cool examination light similar to daylight, very pleasant for the patient.
- Removable magnifying lens with 2.5-fold magnification.
- Possibility to insert external instruments when magnifying lens is removed.
- Screw fitting for secure attachment to handle.
- Sturdy adjustment ring to turn the instrument head to the ideal position on the handle.
- Sealed system for performing pneumatic otoscopy.
- Extremely impact resistant casing made of glass-fibre reinforced plastic.
- Simple exchange of lamp at the base of the instrument head.
- Including ear specula 4 mm.
- Specula fitting is compatible with speculas of other well-known suppliers.

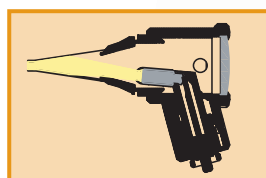
■ No. 10502	black
■ No. 10500	slate grey
■ No. 10504	blue
■ No. 10505	saffron
■ No. 10506	green



pen-scope® otoscope

- Direct illumination with 2.7 V vacuum lamp or 2,5 V halogen lamp.
- Simple lamp-exchange by unscrewing the specula-fitting.
- Specula fitting is compatible with speculas of other well-known suppliers.
- Otherwise identical to ri-mini® head.

■ No. 10490	black 2,7 V
■ No. 10491	black 2,5 V HL
■ No. 10492	slate grey 2,7 V
■ No. 10493	slate grey 2,5 V HL
■ No. 10494	blue 2,7 V
■ No. 10495	blue 2,5 V HL
■ No. 10496	saffron 2,7 V
■ No. 10497	saffron 2,5 V HL
■ No. 10498	green 2,7 V
■ No. 10499	green 2,5 V HL



Direct illumination with an upgraded, reflexion-minimized illumination.



Magnifying lenses

for ri-mini® and pen-scope® otoscopes

- 2.5-fold magnification.
- Screw thread for fast removal and screw attachment.
- Available in all Riester colours.

■ No. 10963	black
■ No. 10962	slate grey
■ No. 10477	blue
■ No. 10964	saffron
■ No. 10966	green

Ear specula






for ri-mini® and pen-scope® otoscopes

- Various sizes are available: 2 mm, 2.5 mm, 3 mm, 4 mm and 5 mm.
- Made of plastic.
- Particulars of the respective size on each speculum.
- Sterilisation at 134° C for 10 minutes in steam sterilizer or disinfection by conventional means possible.
- Supplied in a poly-bag.
- Compatible for otoscopes of other well-known suppliers.

Reusable ear specula

		2 mm No. 10775	Pack of 10
2 mm	2,5 mm	2,5 mm No. 10779	Pack of 10
		3 mm No. 10783	Pack of 10
3 mm	4 mm	4 mm No. 10789	Pack of 10
		5 mm No. 10795	Pack of 10

Disposable ear specula

		2 mm No. 10772-532 No. 10773-532 No. 10774-532	Pack of 100 Pack of 500 Pack of 1000
2 mm	2,5 mm	2,5 mm No. 10772-531 No. 10773-531 No. 10774-531	Pack of 100 Pack of 500 Pack of 1000
		3 mm No. 10772-533 No. 10773-533 No. 10774-533	Pack of 100 Pack of 500 Pack of 1000
3 mm	4 mm	4 mm No. 10772-534 No. 10773-534 No. 10774-534	Pack of 100 Pack of 500 Pack of 1000
		5 mm No. 10772-535 No. 10773-535 No. 10774-535	Pack of 100 Pack of 500 Pack of 1000



The speculum can be fitted securely by turning lightly in a clockwise direction.



pen-scope® otoscopes: Simple lamp-exchange by unscrewing the specula-fitting.

Inflation bulb for the pneumatic test

for all Riester otoscopes



Metal connector for the pneumatic test

chrome-plated

No. 10961



Otoscope, connector and inflation bulb form a closed system for pneumatic otoscopy. The eardrum be examined thoroughly, disorders in the middle ear can be diagnosed.

Ophthalmoscopes

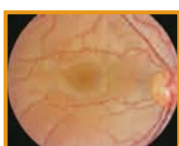
ri-mini® and pen-scope® ophthalmoscopes are practical and simple to use and thus ideal for ophthalmoscopic examinations. With their help, the eye and ocular fundus can be examined in detail.



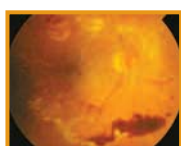
Physician's side



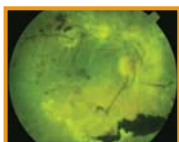
Patient's side



Healthy ocular fundus



Pathological ocular fundus



Ocular fundus with red open filter

Pathological changes to the ocular fundus can be recognized more quickly thanks to the numerous examination possibilities.

ri-mini® ophthalmoscope

- With HL 2.5 V halogen lamp.
- Screw fitting for fast and secure attachment to the handle.
- Sturdy adjustment ring to turn the instrument head to the ideal position on the handle.
- Extremely impact resistant casing made of glass-fibre reinforced plastic.
- Simple exchange of the lamp at the base of the instrument head.

Physician's side

- Focussing wheel with corrective lenses from 0 to +20 and 0 to -20 dioptres.
- Illuminated dioptre display.
- Built-in eyeglass protector.

Patient's side

- Easy to operate aperture hand-wheel.
- Four different apertures:
 - Small circle + semi-circle to reduce reflexes in small pupils.
 - Large circle for normal examination of the ocular fundus.
 - Fixation star for determining central or eccentric fixation.
- Red open filter with contrast-enhancing effect. For the assessment of fine vascular changes, e.g. retinal haemorrhages.

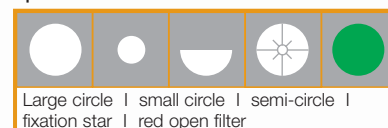
■ No. 10503	black
■ No. 10501	slate grey
■ No. 10507	blue
■ No. 10508	saffron
■ No. 10509	green

Corrective lenses

D +	1	2	3	4	6	10	15	20
D -	1	2	3	4	6	10	15	20

The corrective lenses provide a focused image even in the case of strong refractive anomalies.

Apertures and filters



Large circle | small circle | semi-circle | fixation star | red open filter



Physician's side



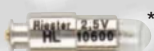
Patient's side

pen-scope® ophthalmoscope

- With 2.7 V vacuum lamp.
- Provided with four apertures, without red open filter.
- Otherwise identical to ri-mini® head.

■ No. 10478	black
■ No. 10479	slate grey
■ No. 10471	blue
■ No. 10480	saffron
■ No. 10481	green

Lamps



HL 2,5 V halogen lamp

for ri-mini® F.O. otoscope
Pack of 6 pcs.

No. 10600



For pen-scope® otoscope
Pack of 6 pcs.

No. 10489



HL 2,5 V halogen lamp

for ri-mini® ophthalmoscope
Pack of 6 pcs.

No. 10605



2,7 V vacuum lamp

for pen-scope® ophthalmoscope
Pack of 6 pcs.

No. 10473



for pen-scope® otoscope
Pack of 6 pcs.

No. 10488

Power sources



Battery handle type AA

without batteries

for ri-mini®, pen-scope® and fortelux® H

- For two batteries type AA.
- Screw fitting for secure attachment of the instrument heads.
- Extremely impact resistant casing made of glass-fibre reinforced plastic.
- Practical metal clip made of stainless steel for attaching the instrument to the doctor's coat.
- Can be easily switched on and off using the slide-switch on the clip.
- Handle diameter: 19 mm.

- No. 10651
- No. 10650
- No. 10474
- No. 10652
- No. 10653

black
slate grey
blue
saffron
green

Alkaline battery 1.5 V, type AA, Pack of 4



No. 10685

Sets

Riester ri-mini® and pen-scope® sets medical diagnostic aids in a pocket format. The high quality and reliable instruments in a handy size can be easily packed away and are to hand in a jiffy.



The black deluxe case is equipped with sturdy sliding safety catches.

ri-mini® sets



ri-mini® F.O. otoscope HL 2.5 V

in hard plastic case with two sliding safety catches

- Plastic tubes each with five reusable 2.5 mm and 4 mm ear specula.
- Battery handle type AA for two batteries type AA.
- Batteries not supplied.

- No. 3010
- No. 3000
- No. 3003
- No. 3004
- No. 3005

black
slate grey
blue
saffron
green



ri-mini® ophthalmoscope HL 2.5 V

in hard plastic case with two sliding safety catches

- Battery handle type AA for two batteries type AA.
- Batteries not supplied.

- No. 3011
- No. 3001
- No. 3006
- No. 3007
- No. 3008

black
slate grey
blue
saffron
green



ri-mini® F.O. otoscope/ophthalmoscope HL 2.5 V

in hard plastic case with two sliding safety catches

- Plastic tubes each with five reusable 2.5 mm and 4 mm ear specula.
- Battery handle type AA for two batteries type AA.
- Batteries not supplied.

- No. 3012
- No. 3002
- No. 3009
- No. 3013
- No. 3014

black
slate grey
blue
saffron
green



ri-mini® F.O. otoscope/ophthalmoscope + fortelux® H, HL 2.5 V incl. tongue blade holder

in padded nylon case with velcro closure and belt loop

- Plastic tubes each with five reusable 2.5 mm and 4 mm ear specula.
- Battery handle type AA for two batteries type AA.
- Batteries not supplied.

- No. 3025-524
- No. 3026-524
- No. 3027-524
- No. 3028-524
- No. 3029-524

black
slate grey
blue
saffron
green



pen-scope® otoscope 2,7 V vacuum or 2,5 V HL

In padded nylon case with velcro closure and belt loop

- Plastic tubes each with five reusable 2,5 mm and 4 mm ear specula.
- Battery handle type AA for two batteries type AA.
- Batteries not supplied.

■ No. 2056-200	black 2,7 V
■ No. 2056-201	black 2,5 V HL
■ No. 2058-200	slate grey 2,7 V
■ No. 2058-201	slate grey 2,5 V HL
■ No. 2060-200	blue 2,7 V
■ No. 2060-201	blue 2,5 V HL
■ No. 2066-200	saffron 2,7 V
■ No. 2066-201	saffron 2,5 V HL
■ No. 2068-200	green 2,7 V
■ No. 2068-201	green 2,5 V HL



pen-scope® ophthalmoscope 2,7 V vacuum lamp

In padded nylon case with velcro closure and belt loop

- Battery handle type AA for two batteries type AA.
- Batteries not supplied.

■ No. 2076	black
■ No. 2078	slate grey
■ No. 2070	blue
■ No. 2086	saffron
■ No. 2088	green



pen-scope® otoscope/ophthalmoscope 2,7 V vacuum lamp

In padded nylon case with velcro closure and belt loop.

- Plastic tubes each with five reusable 2,5 mm and 4 mm ear specula.
- Battery handle type AA for two batteries type AA.
- Batteries not supplied.

■ No. 2090-200	black
■ No. 2092-200	slate grey
■ No. 2080-200	blue
■ No. 2094-200	saffron
■ No. 2096-200	green

fortelux® H/fortelux® N

The compact and attractively designed pocket diagnostic penlights fortelux® H and fortelux® N from Riester offer more precise diagnostic possibilities in the areas of ENT and ophthalmoscopy. The versatile diagnostic penlights made of sturdy material with a wide range of uses fit safely in the hand for every examination. Poorly accessible parts of the body can be better illuminated.

We will be pleased to provide more information about the ordering requirements for customer specific product combinations and packaging upon request.

- fortelux® H with HL halogen illumination similar to daylight. fortelux® N with reliable vacuum illumination.
- Can be used as an illuminated tongue blade holder: concentrated illumination of the oral and pharyngeal cavity.
- fortelux® H and fortelux® N are offered in all Riester colours: combinations with ri-mini®, pen-scope® and other Riester instruments are possible.



Riester pocket diagnostic penlights can be used as illuminated tongue blade holders.



The compact and robust diagnostic penlights are reliable aids, which find a place everywhere.

Diagnostic penlights

The versatile-to-use diagnostic penlights fortelux® H and fortelux® N help to illuminate the throat, nose and ears. They are also suitable for examining the eyes. The penlights are particularly handy and find a place everywhere.

fortelux® H diagnostic penlight



in a case

- With HL 2.5 V halogen lamp for bright concentrated light.
- Including 2 batteries type AA.
- Handle for two batteries type AA 1.5 V.
- Extremely impact resistant casing made of glass-fibre reinforced plastic.
- Practical metal clip on handle for attaching the light to the physician's coat.
- Including blade holder for all conventional wooden tongue depressors.
- In a modern nylon case with belt loop.
- Available in the five Riester colours.

■ No. 5099	black
■ No. 5100	slate grey
■ No. 5101	blue
■ No. 5102	saffron
■ No. 5103	green

Accessories



fortelux® H head

- With HL 2.5 V halogen lamp.
- Simple exchange of lamp at the base of the instrument head.
- Impact resistant, glass-fibre reinforced plastic casing.
- Fast exchange of head thanks to the screw thread.

■ No. 11186	black
■ No. 11187	slate grey
■ No. 11188	blue
■ No. 11189	saffron
■ No. 11190	green



Blade holder

made of robust plastic

- For all conventional wooden tongue depressors.
- Available in slate grey.

■ No. 11185	slate grey
-------------	------------



Wood tongue depressors

- 100 disposable wood tongue depressors in a handy dispenser carton.
- Smooth spatula without splinters and with rounded corners, high-quality birch wood.
- Spatula size: 150 x 18 x 1.7 mm.
- Non-sterile, heated to 70° C.
- Spatulas with advertising imprints individually packed in paper can be ordered. Prices on request.

No. 12530	Minimum order: 100 packages (10 000 spatulas)
-----------	---



Battery handle type AA

Identical to the handles for ri-mini® and pen-scope®.
A detailed description can be found on page 7.

■ No. 10654-01	black
■ No. 10654-02	slate grey
■ No. 10654-03	blue
■ No. 10654-04	saffron
■ No. 10654-05	green



fortelux® N diagnostic penlights

- With 2.2 V vacuum lamp.
- Including 2 batteries type AAA.
- Aluminium outer casing with sterilizable special lacquer.
- With practical metal clip for attaching to the physician's coat.
- Simple on/off function through contact with the metal clip.
- Supplied singly or in packs of 6 (assorted colours or six per colour).



fortelux® N is switched on by lightly pressing the clip.

1 in a plastic case

- No. 5075-526 black
- No. 5074-526 silver
- No. 5077-526 slate grey
- No. 5071-526 blue
- No. 5073-526 saffron
- No. 5072-526 green

6 in a plastic bag

- No. 5070 assorted colours
- No. 5075 black
- No. 5074 silver
- No. 5077 slate grey
- No. 5071 blue
- No. 5073 saffron
- No. 5072 green

Alkaline battery 1.5 V, type AAA, pack of 4



No. 10688



ri-light® set

No. 5090

- Silver diagnostic penlight fortelux® N with 2.2 V vacuum lamp.
- Including 2 batteries type AAA.
- Laryngeal mirror, tongue blade holder and red open filter for simple attachment to the penlight.
- In a plastic case.
- Particularly reasonably priced, for students.

Accessories

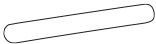
Tongue blade holder



for all conventional wooden tongue depressors
Plastic, white

No. 11180

Wood tongue depressors



detailed description page 10

No. 12530

Laryngeal mirror



for illuminating and mirror examination of the laryngeal area
Plastic, white

No. 11181

Red open filter



for evaluation of tissue colour
Plastic, white

No. 11182

Lamps



HL 2.5 V halogen lamp

for fortelux® H

Pack of 6

No. 11178



2.2 V vacuum lamp

for fortelux® N

Pack of 6

No. 11177

*All lamps are shown in the original size.

diplomat-presameter®



minusus® II



R1 shock-proof



exacta®



big ben®



ri-champion® N



ri-mini®/pen-scope®



ri-scope® L



ri-former®



All Pupil II



E.N.T. endoscopes



ri-thermo® N



cardiophon



ri-focus® LED



ri-integral



ri-vital®



Riester offers a large selection of products for a variety of applications, including

Sphygmomanometers | Instruments for E.N.T.,
Ophthalmological Instruments | Dermatological Instruments |
Thermometers | Stethoscopes | Headmirrors, Headlamps,
Examination lamps | Laryngoscopes | Gynecological Instruments |
Percussion hammers | Pulse oximeters | Tuning forks |

Blood stasis products | Pulmonary pressure measuring devices |
Dynamometers | Pressure infusion instruments | Veterinary instru-
ments |

**You can find detailed descriptions of the products in our
catalog (Order no. 51231-50). Or log on to our website:
www.riester.de.**

Rudolf Riester GmbH

P.O. Box 35 • 72417 Jungingen
Germany
Tel.: +49 (0)74 77-92 70-0
Fax: +49 (0)74 77-92 70-70
info@riester.de
www.riester.de